

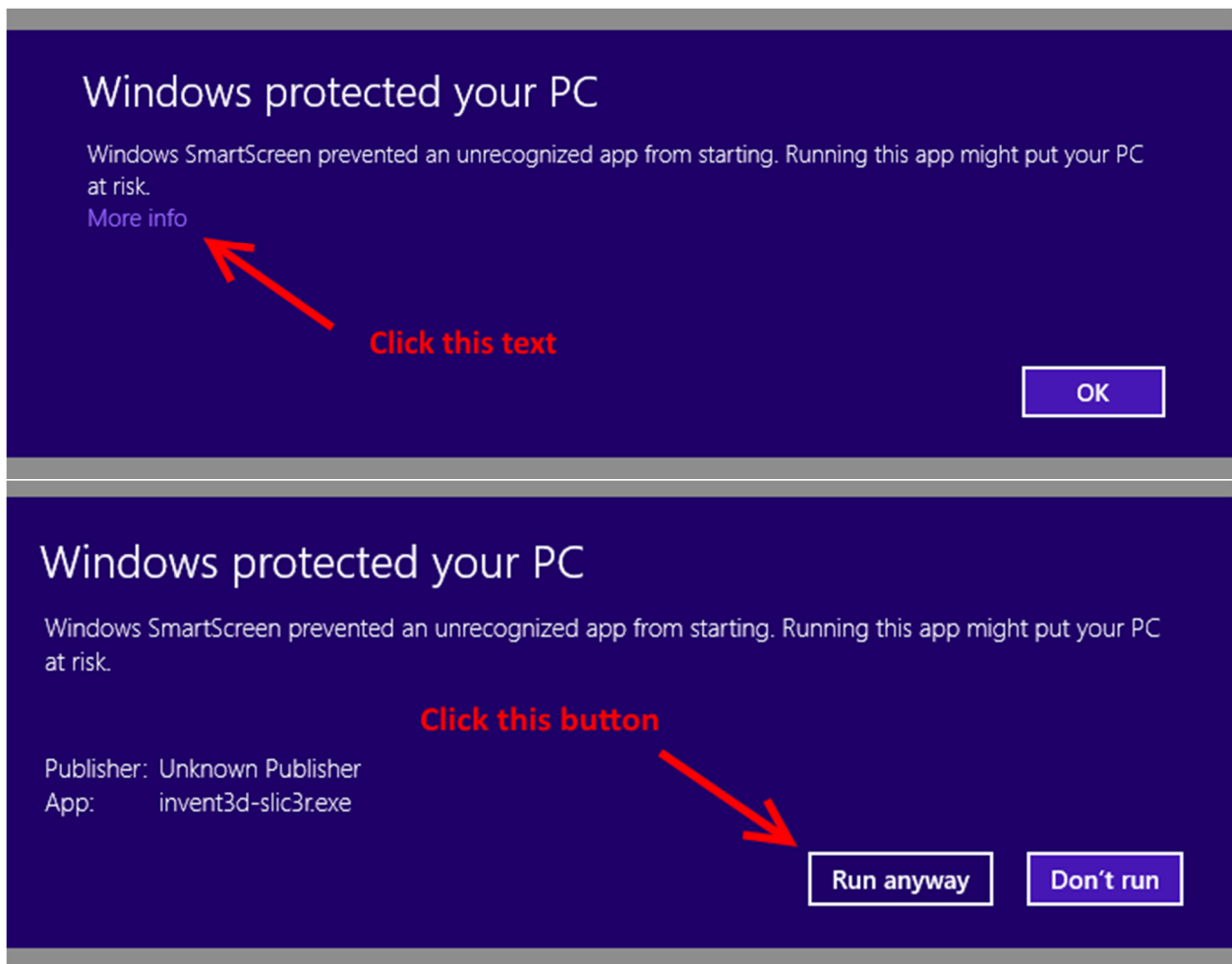
## Slic3r Simple Installation Directions

These directions instruct you on how to download and install Slic3r for use with the INVENT3D printer for most users. Advanced users (meaning folks who have used Slic3r in the past and can “Load Configuration Bundle” in that program) can refer to the advanced instructions.

Slic3r is the tool needed to convert a digital 3D model into printing instructions. It cuts the model into horizontal slices (layers), generates toolpaths to fill them and calculates the amount of material to be extruded. Slic3r is an open source program.

Some graphics have descriptive text and symbols for clarification. These directions are for the Windows operating system and won't work for any other operating system.

1. **Download the Slic3r installer from**  
<http://www.inventorcloud.net/files/invent3d/invent3d-slic3r.exe>
2. **Run the file that you just downloaded. Be sure to appropriately answer any dialog box that appears on your screen (such as the example shown for Windows 8.1 in the pictures below).**



3. In the installer that appears, click the Next buttons, I Agree button, and Install button when they appear on screen to proceed through the installer.
4. On the final page of the installer, click Finish to close the installer.
5. Slic3r icons will appear on your desktop and in your Start Menu/Start Screen. The icon looks similar to the icon appearing below.



6. Double click the icon to use Slic3r.

Note that Slic3r can be uninstalled from your Add/Remove Programs control panel or settings area.

Your program will only work for your currently logged in account. You may install the program for each user account that needs access to that program.

IT personnel may refer to the advanced instructions we provide to install Slic3r in a different way if they so desire.